

Spring 2017

# Historical Journal



**LITITZ HISTORICAL FOUNDATION**

P.O. Box 65 145 E. Main Street, Lititz, PA 17543

717-627-4636

[www.lititzhistoricalfoundation.com](http://www.lititzhistoricalfoundation.com)

## HIRAM (PAT) EBERLY AND HIS CONTRIBUTIONS TO LITITZ HISTORY

*Charlene Van Brookhoven*

There have been many Lititz natives who contributed to historical research not only in the founding of the Moravian Church but also in the town itself. It would be difficult to find a name more associated with bringing together all facets of this historical town than Hiram (Pat) Eberly. After Hiram's retirement in 1961, he decided to spend all his free time devoted to the history of Lititz and Warwick Township. His "free time" research has paved the way for future Lititz historians and the thousands of visitors strolling down Main Street.

"If you can keep your mind active, it doesn't matter how old you are because you'll never be lonesome."

Eberly certainly lived by his words.

At an early age Eberly enjoyed sketching the world around him and found he was quite talented as an artist. His ancestors settled around the Clay area and were neighbors of the Nanticoke Indians who had a village nearby. Hiram's first drawings and subsequent descriptions were based on Nanticoke folklore which had been passed down through his family members. Those talents are still invaluable to the Lititz Historical Foundation. He was one of the original board members when LHF was formed in 1957 and continued as an active member until the end of his life in 1972. Through those years he was determined to learn as much as possible about the town's history and its people.



Hiram spent many days roaming basements, attics, and dilapidated outbuildings in search of original structural characteristics. He could determine the "bones" of a building, how it would have been constructed, and exactly what additions would have been added through the ensuing years.

*Shown above is Hiram (Pat) Eberly*

*Story continued on page 3...*

## Recent Acquisitions

Board of Directors:  
Cory Van Brookhoven  
President

Tom Oehme  
Vice President

Karen Genevish  
Secretary

Marian Shatto  
Treasurer

Directors:  
Bob Turgeon

Cathy Doremus

Teri Forster

Jerry McDonald

Paul Miller

Kathy Blankenbiller

Tom Oehme

Henry Paul

Donna Olah

Newsletter Editor:  
Cory Van Brookhoven



1. Lititz photos, collectibles, old advertising; 1945 LIFE magazine (Lititz issue); Lititz high school yearbooks; Look magazines. Gift of Judy Schoenberger.
2. Warwick House menu; vintage Lititz photos; Lititz programs and flyers. Gift of Connie Lawrence.
3. Vintage hardcover books; magazines on antiques; Lititz Moravian hymnal; a book on the Amish; vintage Lititz newspapers. Gift of Dale Shelley.
4. Various Lancaster County history books; a 1976 Lititz Bicentennial flag; a set of King Roses design dinner wear; a framed 1842 map of the town of Warwick. Gifts of Cathy Rannels.
5. Linden Hall bicentennial book. Anonymous donor.

*We thank the various members of the community for these recent donations! Please consider donating appropriate Lititz and Warwick Township items to our organization where these items will be treasured and preserved for generations.*



### BECOME A VOLUNTEER AT THE MUSEUM

Love Lititz? We are currently seeking volunteers for our upcoming season! A variety of shifts are available. For only 6-15 hours per week you can help keep Lititz one of the coolest small towns in America! Become a Lititz Museum volunteer. Give us a call at 717-627-4636 or email Gina Yoder at [gina@lititzhistoricalfoundation.com](mailto:gina@lititzhistoricalfoundation.com)

## *Hiram (Pat) Eberly Con't:*

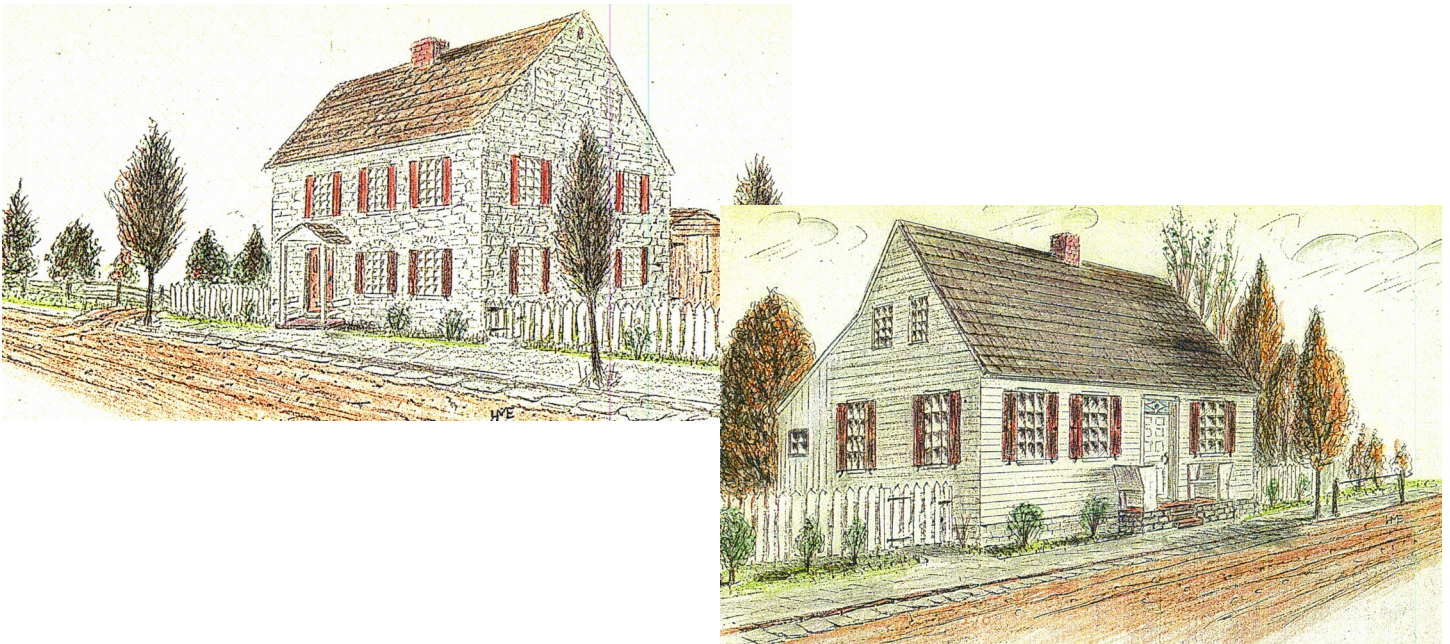
By reading information contained in original Moravian Church records, Hiram determined the location of mills, orchards, dams and surrounding fields.

He shared his information with The Lititz Record Express as each subject was completed. Readers of the newspaper looked forward to Hiram's latest additions. Many readers began their own cherished scrapbook with his drawings and descriptions. In 1968 when he was curator of The Lititz Historical Foundation, Mr. Eberly donated a copy of a large loose-leaf notebook to The Lititz Library. It contains sketches and articles he had been working on for many years. The original notebook is in the library of LHF.

“So many historians are so dry people don't want to read them” was Hiram's thinking as he wrote his descriptions in a very light style.

In 1971, a year before his death, Mr. Eberly compiled the folder “A Stroll Down Main Street”, which includes sixteen sketches of the original dwellings, a description of the history of the buildings, and photos of the buildings as they looked in 1971. Also included is a map of Main Street detailing the location of each house. The folder was distributed at tourist attractions in Lancaster County and opened up an influx of outsiders who wanted to see this “Little Williamsburg”.

Many of Hiram Eberly's colored drawings are hanging on the walls of The Lititz Historical Foundation. The original completed loose-leaf notebook, so generously donated by him, can be viewed at the museum or an exact replica at The Lititz Public Library genealogy room. Take the time to enjoy a look at these wonderful additions to the personal history of Lititz by a man who left his legacy to our town.



*Above: Several renderings of early Lititz buildings by Eberly. Left to right: 223 East Main street; 66 East Main Street.*

*Spring 2017*

*HISTORICAL JOURNAL*

## *We Open For the Season April 28th!*

In what promises to be a very busy season, we are excited to announce that due to demand, this year, we are opening for the season ONE WEEK early! Our very first day of operation will be Friday April 28th. Our museum and gift shop hours will remain Monday through Saturday; from 10am-4pm. Then on Memorial Day, our 1792 Johannes Mueller House will be open for tours with a costumed docent.



### **But that's not all!**

Beginning June 4th we will be open on Sundays! Our museum and gift shop hours for those days will be 12-3pm. We are very excited to offer these extended days this coming season. Stop in and see what's new, visit our gift shop, or relax in our Mary Oehme Gardens. We are looking forward to seeing you. Remember, as a member in good standing you and everyone in your party receive free admission to the Johannes Mueller House, this quarterly newsletter sent to you, plus a 10% discount in our gift shop. See you soon!

## *Historical Happenings*

On Friday March 10th, we were proud to be a part of Fox 43's "Live and Local" broadcast from the Lititz Welcome Center. Several leaders from Lititz were interviewed, including our President Cory Van Brookhoven. While it was a chilly morning, the excitement of the crowd and energy did not put a damper on our spirits.

### **FOX43 MORNING NEWS**

**LIVE AND LOCAL**  
**FRIDAY, MARCH 10TH**  
**LIVE FROM THE**  
**'WELCOME CENTER'**  
**IN LITITZ**



We have also recently worked with Blue Ridge Channel 11 in producing several historical segments in our museum. These thirty-second commercials showcase various artifacts in our museum. You will also see other segments filmed around other historical spots around town. MANY THANKS to Channel-11 for approaching us to film these videos!

*Spring 2017*

HISTORICAL JOURNAL

## *Our Herb Garden*

*Leanne Martin*

It's Spring! That means time to replant and restyle the herb garden. Last year was a "get acquainted" between myself and the plantings—some plants will stay, others will find a new home. My goal is to introduce more of the historic herbs for a Dyer's Garden. These will be labeled so that guests can identify plants on a list available at our Museum and Mueller House. In addition to these plants, we hope to include flowers that will attract butterflies and hummingbirds!

A garden to delight the eye and further the education of herbs and their part in the history of our grounds—I can't wait to dig in the dirt and bring the gardens to life again!



‘THE SPINNER SPINS A THREAD OF FLAX INTO CLOTH, AND DYER’S HERBS BRING COLOR TO BOTH CLOTH AND LIFE!’

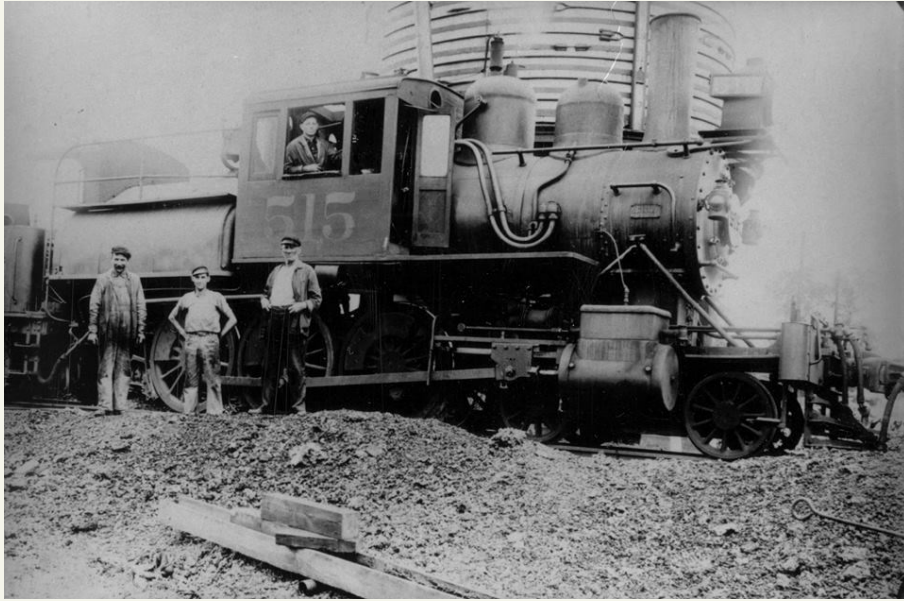
### *Editor's Note:*

Special thanks to Leanne as well as Karen Genevish for all of the time they put into making our gardens so gorgeous! We already have several events and weddings booked for 2017 And anticipate more in the coming months.

If you would like to rent our gardens or know someone who has an upcoming special occasion, please give us a call at 717-627-4636 and we'd be happy to arrange your visit to our Mary Oehme Gardens.

## DID YOU KNOW...?

Engine Number 515 and crew can be seen here in this photo taken in 1905, when they stopped beside the water tank at the Millway Station of the Reading and Columbia Railroad line in Warwick Township.



P.O. Box 65 145 E. Main Street, Lititz, PA 17543  
*RETURN SERVICE REQUESTED*

*Historical Journal*  
Lititz Historical Foundation's

