

Spring 2012

Historical Journal



LITITZ HISTORICAL FOUNDATION

P.O. Box 65 145 E. Main Street, Lititz, PA 17543

717-627-4636

www.lititzhistoricalfoundation.com

Board of Directors:

Randy Weit - President

Kenneth Martin - Vice President

Charles Steifvater - Secretary

Cathy Doremus - Treasurer

Carl Brubaker - Director

Cathy Doremus - Director

Teri Forster - Director

Beverly Maddox - Director

Kenneth Martin - Director

Randy Miller - Director

Tom Oehme - Director

Charles Steifvater - Director

Cory Van Brookhoven - Director

Randy Weit - Director

Henry Paul - Director

Newsletter Editor:
Cory Van Brookhoven



Find us on Facebook!

Lititz Antique Show to Celebrate Golden Anniversary

Hey, Lititz! Strike up the Moravian trombone choir. Rosin the dance shoes. Begin that dance hall promenade. Now stamp the floor, your trotters shake! The Lititz Historical Foundation is proud to announce the Lititz Antique Show turns 50 years old June 29, 30. Yep, the big 5-0; the half century mark; a Golden Anniversary birthday. Tell everyone you know. Come join the birthday bash.

In 1962, the year of the show inauguration, JFK was the 35th president of the United States. Wilt Chamberlain playing basketball for the Philadelphia Warriors scored 100 points in a single game at Hershey Sports Arena. In Lititz, Mildred McElroy, an early LHF member, suggested an antique show to raise funds for the care and upkeep of a newly acquired Johannes Mueller House erected 1792. As the saying goes "The rest is history."

Imagine this. The first Lititz Antique Show ran three days in conjunction with the famed July 4th celebration at Lititz Springs Park. Admission price was 75 cents or

50 cents with discount card. Exhibitors paid \$20 or \$25 for floor space rental, as 19 exhibitors sold wares at the Lititz Recreation Center.

Now, turn the calendar ahead 50 years. In 2012 the Lititz Show has expanded to 40 dealers from six states, and remains Lancaster



County's only surviving antique show. Ken Martin, LHF board member and show chairman said recently "This is an old timey antique show, not unlike the shows of yesteryear. It features country antiques and rural material culture such as might have been employed

Continued on page 3 inside...

Recent Acquisitions

The museum has recently acquired the below generous donations and/or historical items. Please take a moment while visiting the library or museum to view these wonderful treasures. If you have a Lititz item that you wish to donate, please contact Randy Weit. Your gift is tax-deductible, and will ensure that your item will be preserved and cherished for generations to come.

1. A newly published book entitled "Early School Houses of Warwick Township" by Martee Xekallis.
2. A large box full of old blueprints concerning various rooms located within the General Sutter Inn including the former cafe which is now the Bulls Head Pub. Gift of the General Sutter Inn.
3. An 1872 time capsule including contents which were placed there in 1872 by Aaron Wissler in Brunnerville. Recently, this house was torn down which used to lie on the John Beck School property. Contents include two old newspapers from 1872; A Scientific American newspaper; a notebook written by Aaron Wissler; 5 old family photos; and a patent granted to Wissler. These are extraordinary items that offer a first-hand glimpse into the world of the Iron Master of Brunnerville. Gift of the Warwick School District.

The Foundation is very thankful for the above generous gifts! Additional donations will be printed in future issues of the Historical Journal.

PLANT EXCHANGE SLATED FOR SUNDAY MAY 6TH!

The Lititz Historical Foundation will hold its Annual Plant Exchange on Sunday, May 6th at 1:00 PM. The event will be held in the Mary Oehme Gardens, behind the Museum buildings at 137-145 East Main Street in Lititz, rain or shine. The plants to exchange must be perennials and must have identification tags for each plant. Each plant must be placed in a container for transportation.

Upon arrival, a ticket will be handed out for each plant. The plants must be placed in categories; Sun, Shade, Exotic, Bulbs, Herbs and Ground Cover.

These tickets can be redeemed for another plant after all plants are placed in the categories and the people have some time to explore the Plant Exchange categories.

An announcement will be made at approximately 1:30 PM to select plants in exchange for your tickets. The Lititz Garden Club members will be on hand for assistance and to help answer gardening questions. You can bring 1, 2, 5, or more plants and enjoy the afternoon in the Foundation's Gardens! The event is open to the public and there is no charge for this event, but a free will donation can be made to help maintain the Gardens.



Spring 2012

HISTORICAL JOURNAL

Antique Show's Golden Anniversary Con't:

for daily life in Lititz, Brickerville or Rothsville. This show remains our only fundraiser for keeping the Mueller House well maintained, which is our most important goal. Don't you think it's ironic that for 50 years the LHF has been raising funds for the future by selling things from our past?

Show hours are June 29, 10-5 and June 30, 10-4. Admission is \$6 or \$5 with discount card. Show location remains at Bonfield Elementary School, 101 North Oak St., Lititz, PA 17543. Visit our website at www.lititzhistoricalfoundation.com for more information call Ken Martin at 717-626-7059.

*We hope to see you, your family, and
your friends at our special*

50th Anniversary Antique Show!

CELEBRATING
50 *Years*
1962 - 2012

LITITZ ANTIQUE SHOW
40 dealers ♦ country decor

FRIDAY
JUNE 29
10 AM - 5 PM

SATURDAY
JUNE 30
10 AM - 4 PM

HELD AT
Bonfield Elementary School • Lititz, PA

LITITZ HISTORICAL FOUNDATION
Benefit Johannes Mueller House, 1792

NEW WEBSITE!

We have heard your suggestions, and we have listened! Our new website, which is located at www.lititzhistoricalfoundation.com is now up and running. We have added some great new features including an upcoming events blog, a section on membership where current or new members may print out membership forms and mail them in, downloadable past newsletters, and coming soon....a web store! In this portion of the website, you will be able to purchase items from our gift securely through a credit card system called PayPal. It will be a fast and easy way to order many items direct from our gift shop and have them shipped right to your door. We welcome your feedback, and are looking for any additional suggestions that you would like to see on our new site. Please visit today, and pass it onto a friend or family member!

www.lititzhistoricalfoundation.com

*Spring 2012**HISTORICAL JOURNAL*

Family Vacations at the Turn of the Century

Charlene Van Brookhoven

Do any of us spend our vacation at home in Lancaster County? Or do we find exotic travel adventures aboard a 3,500 passenger luxury liner? Do we opt as a family to travel to Disney World and wait hours in a line to soar down a “mountain” made of plastic and cement? Family vacations today are far more strenuous, not only on body and mind but also on the pocketbook than family outings at the turn of the century.

During the late 1800’s, residents in the small town of Lititz were mostly content to visit their neighbors on front porches and discuss the gossip of the day. Small children were permitted to wade in the icy cold waters of the Springs Creek catching an elusive crayfish or two. Native trout were still swimming in the neighboring Hammer Creek just waiting for that juicy “night crawler” at the end of a bamboo fishing rod.

The R & C Railroad ran a passenger line through Lititz which brought picnickers to the Springs Park from as far away as Reading to spend their vacation time enjoying the festivities. July 4th of each year was a very special and event filled day of activities for both adults and children.

When the trolley came to Lititz from Lancaster in 1899, a whole new choice of vacation destinations was offered the to local residents at a very nominal cost. The Conestoga Traction Company, owner of the local trolley line, offered a route from the depot in Lititz, south through Lancaster, to the banks of the Conestoga River (still a creek in those days) where the Rocky Springs Park was located. Rocky Springs Park had been offering leisure attractions to locals; but, when the trolley arrived bringing 1,000’s of visitors daily, the park grew to include a roller coaster, carousel, various thrill rides, a swimming pool, bowling alley, roller rink, shooting gallery, penny arcade and even a fun house where big brothers could scare their little sister into frantic fits of screaming.

For the less adventurous, the Lady Gay steam boat would ferry passengers one mile up the Conestoga River and return to the area where families gathered for a picnic lunch. At the end of a fun-filled day, the family would return to Lititz on the open-air trolley.

Another vacation destination for people living in Lititz was Penryn Park on the Cornwall and Mt. Hope Railroad line in the South Mountain range west of Brickerville. William C. Freeman, cousin of Robert Coleman of the iron furnace family, opened his park in July of 1885. The park originally was available for church organizations looking for a place of serenity in a natural setting to accommodate worship services.

After a few years, Penryn Park became another recreation area covering several hundred acres of green meadows for picnicking as well as a small lake for boating. There were croquet and lawn tennis areas, a large dancing pavilion, a band stand, kitchen and refreshment facilities, a carousel, and a baseball field visited by Babe Ruth in 1917.

To view many old photos, and keep up with the latest news,
FOLLOW US ON FACEBOOK!



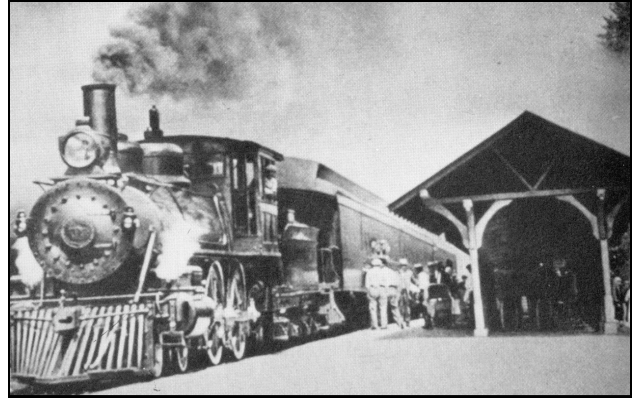
Family Vacations at the Turn of the Century Con't:

Charlene Van Brookhoven

A train could be boarded at the Broad Street station in town, then west on the rails to Manheim. Another train would take riders directly to Penryn Park for a small fee.

In 1925 a devastating thunderstorm with torrential down-pours flooded Penryn Park. People were stranded in the pavilion and children had to stand on top of the carousel animals to avoid the flood. The park never recovered from the damage of the flooding. It was decided to close the park entirely mainly because a similar park in Hershey was gaining popularity.

Right: The train dropping off patrons to Penryn Park.



The beautiful Mt. Gretna, still popular today with theater, arts, swimming, The Hall of Philosophy, and especially The Jigger Shop is a favorite summertime destination for town folks on hot, humid evenings.

Mt. Gretna has been a special area since 1884 when Robert Coleman cleared woodland to be used as a leisure recreation destination for people in Lancaster and Lebanon Counties. It was also established to boost the economy of his C & L Railroad. At the turn of the century, a day at Mt. Gretna was not complete without a ride on the Narrow Gauge railroad – the toy-like train whose tracks led to the top of Governor Dick, the highest peak in the area.

Many families from Lititz spent hot summer days in Atlantic City, New Jersey watching the diving horse on The Steel Pier and frolicking in the salt water of the Atlantic Ocean. What a thrill it was to hop aboard the train and arrive in a town as exciting as Atlantic or Ocean City with their boardwalks, salt water taffy and men wearing wool bathing suits.

These were our grandparent's "vacations" and enjoyed by many adventurous families during much simpler times.

GIFT SHOP NEWS

You will want to visit the Gift Shop to see all the new selection of gifts for you, your home and garden including:

- * Note card featuring many scissor cutting designs by local artist Arlene France
- * Unique necklaces with coordinating earrings designed in combination metals of pewter, brass and cooper
- * Colorful fabric necklaces
- * Many sizes of carved birds and ducks
- * Whimsical garden art
- * Table runners and quilted squares

PICTURE QUIZ



Many of our readers may no doubt recognize this woman. What was her name, and where did she live?

Answer to last issue's photo: This is an older photograph of the Brunnerville United Methodist Church, in its original location in the alley of what is now called Church Street in 1870. Their current location is 517 Pine Hill Road.



P.O. Box 65 145 E. Main Street, Lititz, PA 17543
FORWARDING SERVICE REQUESTED

Lititz Historical Foundation's
Historical Journal

Non-Profit Org.
U.S. Postage
PAID
Permit #141
Lititz PA