

Fall 2025

# Historical Journal



**LITITZ HISTORICAL FOUNDATION**

P.O. Box 65 145 E. Main Street, Lititz, PA 17543

717-627-4636

[www.lititzhistoricalfoundation.com](http://www.lititzhistoricalfoundation.com)

---

## The Old Lititz Brewery

*Charlene Van Brookhoven*

To the south of the spring head in the Lititz Springs Park along Maple Street stands a two-story brick building which has been referred to by previous generations as the Old Lititz Brewery.

The original brewery building was built in 1833 by John Kreiter after gaining permission from the Moravian Church to replace the popularity of whiskey. Kreiter learned the art of beer brewing in his native Germany and bottled a German-style lager. There were several liquor operations in the Moravian community, but the results affected the demeanor of the men in town to the point that hard spirits were soon controlled by the church. Therefore, the idea of a brewery was well accepted by the Moravian overseers.

Several years after the brewery was in operation Kreiter sold his business to Michael Muicke. It changed hands three more times until the partnership of Frances Rauch and Richard Tshudy became the new owners. In 1865 the Rauch and Tshudy Brewery burned to the ground. The internal combustion of the malt stored in the kiln used for the fermentation process was the cause. Because of the financial loss of the business Rauch decided to step away but Tshudy found a new partner in a Mr. Keller. It was these two owners who rebuilt the brewery.

Included in the original structure was a cellar used to store bottled beer in a cool environment. Today this underground "cave" is still intact and well preserved with limestone high arched ceilings and catacombs. There are also two springs coming from beneath the brick-lined floor. These cold waters helped to control the temperature and humidity within the underground space.



*Above: The former Lititz Brewery building. Story continued inside on page 5*

## Christmas Candlelight Tours Return Dec. 12 & 13th!

### Board of Directors:

Cory Van Brookhoven  
President

Tom Oehme  
Vice President

Tom Wentzel  
Secretary

David Orr  
Treasurer

### Directors:

Brian Donmoyer

Michael Caldwell

Jerry McDonald

Gail Horrocks

Tom Clouse

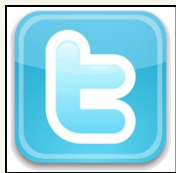
Dan Gwinn

Bill Oehme

Robin Roumeliotis

### Newsletter Editor:

Cory Van Brookhoven



Two very merry nights!

Our popular Annual Christmas Candlelight Tour is back, and this time, will take place over two nights! What better way to get into the holiday spirit than to visit Lititz, Pennsylvania.

On December 12th and 13th, the Lititz Historical Foundation will hold its Annual Christmas Candlelight Tour. Guests will receive a 40-minute guided tour of the 1792 Johannes Mueller House and will learn the story of Mueller and his family as well as history and customs of the early Moravian community of Lititz during the 18th century. Tours depart every 15 minutes and run from 5-8pm each evening.

While you're there, be sure to visit the Lititz Museum for holiday refreshments and to shop our gift shop for a tremendous selection of items! For ticket holders, we'll also be offering a 10% discount in our gift shop on both evenings. Tickets are \$10 per person.

Tickets are now available! Scan the barcode below to be taken to the purchase website, or call us at 717-627-4636 before they are sold out!

Scan this barcode with your smartphone:





## Annual Christmas Carol Sing is December 11th!

Join the Lititz Historical Foundation in conjunction with the Lititz Moravian Archives for their annual Community Christmas Carol Sing Thursday, December 11th at 6:30 PM.

This is a FREE event but donations are always appreciated! The event will take place at Moravian Church Square. The Moravian Trombone Choir will be on hand and free song sheets will be handed out as you, your friends, neighbors, and family will sing holiday classics. Afterwards, all are welcome to warm up inside Fellowship Hall where light refreshments will be served.

The Putz will also be available for various showings throughout the evening in the church's social hall. See you there!



## The 2025 Extra Give is November 21st!

On November 21st 2025, the Lititz Historical Foundation is participating in the annual Extraordinary Give—(Lancaster County's Largest Day of giving) and we could use your help this year achieving our goal! On that day, for a 24-hour period, online donations can be made to the Lititz Historical Foundation through a special website.

Our goal this year is to raise \$10,000 during this extra special event. With your help, we CAN achieve this goal! On November 21st beginning at 12am, online donations can be made to us by visiting [www.extragive.org](http://www.extragive.org) and then search for Lititz Historical Foundation. For your convenience, online donations can also be made at our museum that day.

Thank you so much for your generosity, and for your support of local history!



## **Annual Departed Spirits Tour is October 25th!**

Our very popular Lititz Departed Spirits Tour takes place October 25th, 2025!

Guided by a costumed docent, guests will be led around the property of the Lititz Moravian Church. They will encounter several “departed spirits” of Lititz who will share their tales and fascinating history with them. Just some of the many things you will see and learn about include a haunted, former Revolutionary War hospital a 1786 corpse house, as well as many more interesting places and characters along the way.

Bring your cameras, PKE meters, and video recorders and have them ready!

The first tour begins at 5pm, and groups of up to 25 people will depart every 15 minutes.

This is a family friendly event, and a joint fundraiser between the Lititz Historical Foundation and the Lititz Moravian Archives Committee.

Be sure not to miss this event as it always sells out! Scan the code below with your smartphone to book!



*Left: An early 1900's photograph of Cameron Weitzel and his horse, taking a break along the beautiful area known as Keller's Mountain located between Lititz and Rothsville.*



## LHF Annual Meeting is November 15th

Join us for our Annual Meeting at the Lititz Public Library on November 15th, 2025 beginning at 1:30pm. After some brief items of business, we'll turn the afternoon over to Lititz Historical Foundation President Cory Van Brookhoven, who will discuss the history of turnpike mile markers in Lancaster County. Generations ago, Lancaster County had ten "turnpikes" that ran through many of its towns, with small markers noting the distance at each mile. While they were once critical, today, many of these makers have been removed, destroyed, or have simply vanished from their original locations. Van Brookhoven will discuss the history of these markers and also present updates concerning the whereabouts of many of these important parts of our county's history. In addition to serving at the President of The Lititz Historical Foundation, Van Brookhoven has penned four books on Lancaster County history and has also written over 150 feature stories for the Lititz Record Express newspaper. The presentation is free and open to the public. Signups begin on November 1<sup>st</sup> at 9am. Beginning on that date and time, contact the Lititz Library to reserve your spot by calling 717-626-2255. Seating is limited to 100 people.

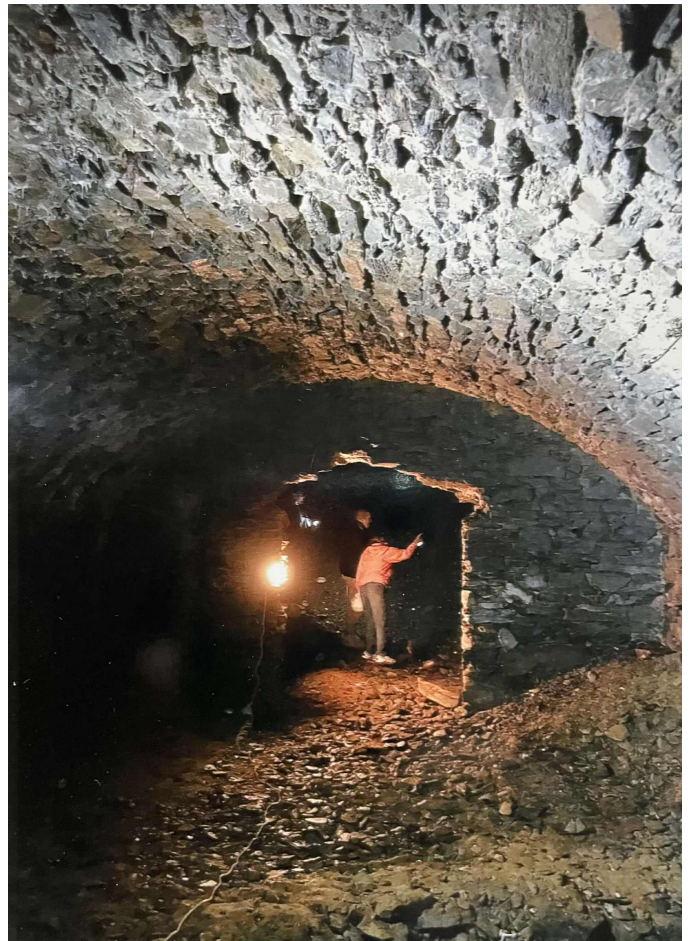
## The Old Lititz Brewery Con't:

In the later days of the 19th century, Lititz town folks were convinced hoses led from the brewery to the inns and taverns in town supplying beer to the many local imbibers. Another tale regarding the old brewery was there were tunnels leading into the Lititz Springs Park and also as far as Broad Street. These stories have never been proven true or otherwise.

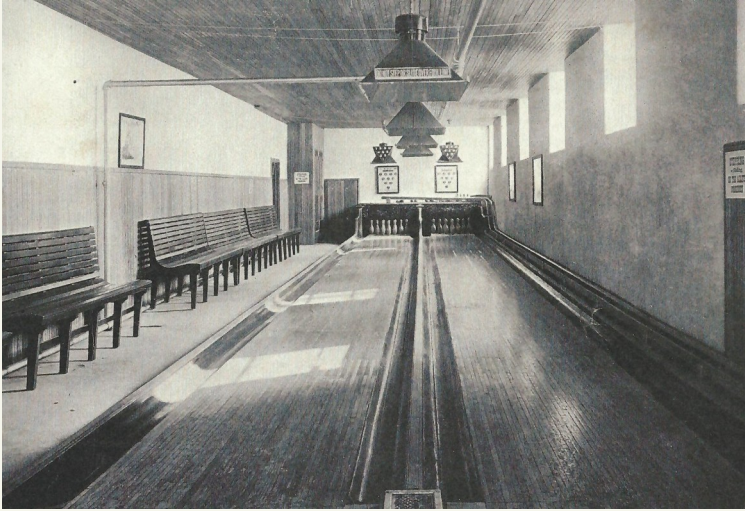
In 1884 the Lititz Brewery met overwhelming competition from larger, more diverse Lancaster brewers who were producing a much higher quality of beer. The sale bill for the property in October of 1884 reads:

*The improvement thereon are a three story brick building, 30x60 feet, known as The Lititz Brewery, conveniently arranged for beer brewing and as a dwelling house, with brick engine house and frame shed attached, the latter 30x60 feet; frame stable, with wagon shed attached, and other out buildings. The brewery is outfitted complete with brewing apparatus, including a 14 horse power engine and boiler, hogs-heads, kegs, etc. Two vaults are beneath the brewery, divided into several apartments, which for convenience and coolness have few equals in Lancaster County. A well of good water beneath the brewery, arranged for pumping by stream, a number of fruit trees and grapevines on premises.*

*Right: Several rooms inside the former Lititz Brewery*



## DID YOU KNOW...?



In 1912, Linden Hall School for Girls installed a two-lane bowling alley underneath the gymnasium. The lanes were paid for by Jacob Nolde, whose daughter, Ella, graduated from the school in 1908.

A beloved environmentalist, before his death in 1916, Nolde was largely responsible for creating Nolde Forest Environmental Center in neighboring Berks County.

Lititz Historical Foundation's  
*Historical Journal*  
 P.O. Box 65 145 E. Main Street, Lititz, PA 17543  
 RETURN SERVICE REQUESTED

