

Summer 2025

Historical Journal



LITITZ HISTORICAL FOUNDATION

P.O. Box 65 145 E. Main Street, Lititz, PA 17543

717-627-4636

www.lititzhistoricalfoundation.com

Scissor/Knife Cuttings in The Mueller House

Charlene Van Brookhoven

In 1961 a group of Lititz residents were interested in preserving the Moravian way of life and began a quest to find as many local and historical family items worth preserving.

Their main goal was to open a museum displaying the cultural and societal beginnings of what is today the town of Lititz. The group put out a plea to residents and people who had local ties to the once only Moravian community. Among 19th century furniture, household and kitchen objects, ephemera, and many fabric pieces were books and family bibles. One local lady was getting a collection together from her family to donate to the new museum.

In with these items was her family Bible from the mid-1800s including her family names. While perusing the pages, she came across four early hand cut, paper folded valentines created by Moravian sisters at the Linden Hall School for Girls in Lititz during the late 18th and early 19th centuries.

According to one member of the original accessions committee the valentines would have been cut with a “walking knife” or small scissors as they were most likely designed and cut by a young lady or young gentleman to show their affection or friendship. A walking knife would have been used by a young man as they were familiar with the skills of their own pocket knife. A walking knife differed from a common pocket knife as they would have had more decorative handles made of bone, horn or ivory. The length of the steel blade would have affected the cutting control and detail of the designs on the paper. It was important to have the knife fit comfortably in the hand for extended cutting to avoid jagged and frayed edges.



Above: Two antique valentines currently on display in the 1792 Johannes Mueller House. Story continued on page 5 inside.

Volunteers Wanted!

Board of Directors:
Cory Van Brookhoven
President

Tom Oehme
Vice President

Tom Wentzel
Secretary

David Orr
Treasurer

Directors:

Brian Donmoyer

Michael Caldwell

Jerry McDonald

Gail Horrocks

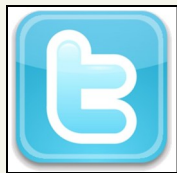
Tom Clouse

Dan Gwinn

Bill Oehme

Robin Roumeliotis

Newsletter Editor:
Cory Van Brookhoven



If you love Lititz, then this volunteer opportunity is for you! We are seeking a desk volunteer that can work 1-2 shifts per week including some weekends. Shifts are 11am-2pm or 2pm-5pm. Interested? Email us at info@lititzhistoricalfoundation.com today!

VOLUNTEERS NEEDED

- Greet guests
- Process gift shop sales
- Meet people from all over the world

Shop our gift shop!

Our gift shop is restocked with locally hand-poured scented candles! There are several to choose from including Moravian garden, Amish wash day, country lemon, and more!



Summer 2025

HISTORICAL JOURNAL

Our 62nd Annual Antiques Show is June 27-28

Lancaster County's oldest show of its kind and always a perennial favorite, our biggest fundraiser of the year will be staged at the Warwick Middle School (401 Maple Street) in Lititz June 27th and 28th, 2025.

Admission is \$10 per person. \$9 in advance by visiting the ticket link below.

Hours are Friday 10am-5pm; and Saturday 9am-2pm.

This two-day event is an "old time country show" a cast of over 50 dealers will present a wide range of interesting, reasonably priced country wares and dry goods. Shoppers can expect to find farm items, stoneware, kitchen goods, textiles, early lighting, transfer ware, doll items, coin silver, holiday items, Pennsylvania folk art, and more!


Hungry shoppers will have an opportunity onsite to purchase hot food for lunch or a snack.

This is our biggest fundraiser of the year – See you there! Purchase tickets in advance and save on admission!

Purchase your advance tickets here: <https://www.zeffy.com/en-US/ticketing/62nd-annual-antiques-show>



Sponsored by



2025 Lititz Antiques Show

62nd Annual

Warwick Middle School

401 Maple Street
Lititz, PA 17543

❖ Dates ❖

Friday June 27th
Saturday June 28th

❖ Times ❖

Friday 10am - 5pm
Saturday 9am - 2pm

Primarily Country

Summer 2025

HISTORICAL JOURNAL

2025 Summer Concert Series Announced

Save the below dates and come join us in our Mary Oehme Gardens for four spectacular nights of live music!

The series kicks off June 22nd with Fierce, which will be play songs by Adele, Jethro Tull, Heart, and much more! Next, on July 13th, the party continues with The A440's, a wonderful Millersville University based brass band which will play a great mix of rock, pop, and jazz fusion. Then, August 10th, get ready for The Josh Squared Band Trio, which will perform some of the most iconic hits spanning across the last few decades. The group provides musical entertainment at various venues throughout the Mid-Atlantic States including organizations such as Caesars Entertainment, Hollywood Casino Entertainment, and Bethlehem Musikfest.

Finally (last, but certainly not least!), we're bringing you our Annual Ice Cream Social on August 31st. That evening, the band Bad Slice will be live on stage, playing outstanding hits from the 70s and 80s. Ice cream will be provided by Greco's of Lititz.

So bring your lawn chairs, blankets, and dancing shoes for a wonderful evening! The concerts, which will begin at 6:30pm, are free and open to the public, but donations are greatly appreciated! The concerts this Summer are sponsored by Tiger's Eye of Lititz - Thank You!



The A440's



Bad Slice



Fierce



Josh Squared Trio Band

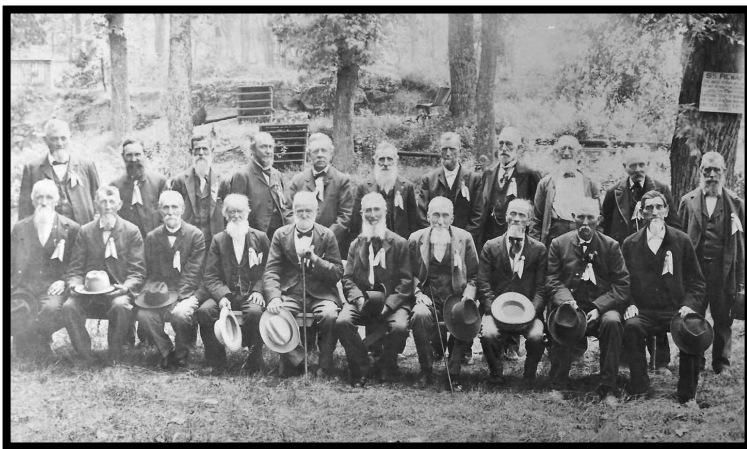
Scissor/Knife Cuttings in The Mueller House Con't:

The students attending Linden Hall School for Girls during the 19th century were taught many hand crafts including penmanship, fabric samplers to practice the fine art of hand stitching and also to learn their ABC's. The valentines in the Lititz Historical Foundation Mueller House would have been done by folding a piece of paper in half and then half again to begin cutting a creative design representing love and friendship. A small scissors would have been used by the girls rather than a heavy hand-held knife. Some pieces from the more experienced girls were embellished with water colors to enhance the finished works of art.

Thanks to the original committee who were interested in preserving the early days in the life of the community, these valentines have been preserved and are on display in the Johannes Mueller House at 137 East Main Street.

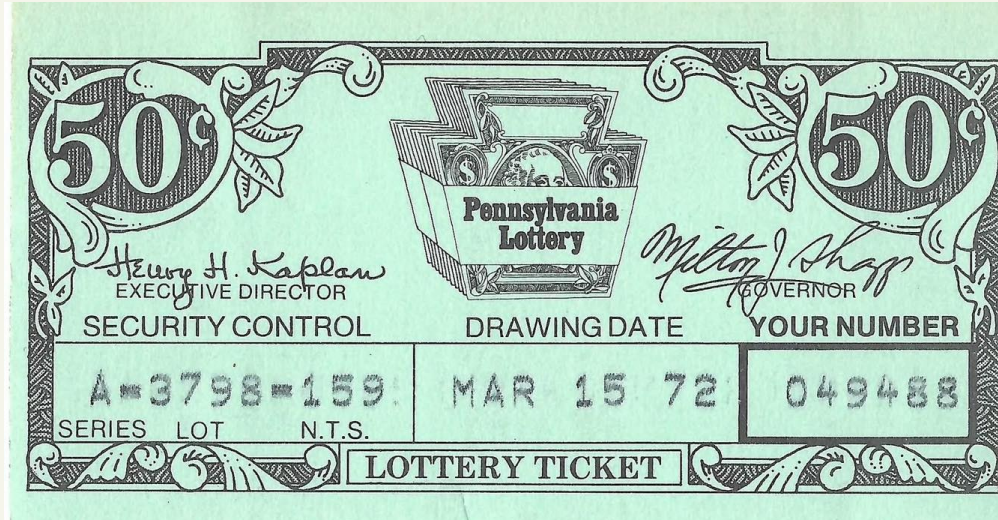


Above: Two more antique valentines currently on display in the 1792 Johannes Mueller House.



Seen here is a photo of Major John R. Bricker (1841-1906) and his G.A.R. regiment which held a reunion in Lititz Springs Park in 1902. Major Bricker is standing in the back row, fifth from the left. The G.A.R., or Grand Army of the Republic, was a fraternal organization made up of veterans who served in the Civil War.

DID YOU KNOW...?



Did you know...Pennsylvania Lottery's inaugural game occurred on March 15, 1972. The prize was \$50,000. Shown here are tickets purchased in Lititz for the state's very first drawing.

Lititz Historical Foundation's
Historical Journal
 P.O. Box 65 145 E. Main Street, Lititz, PA 17543
 RETURN SERVICE REQUESTED

